

Ombra/

floating jamb with shadow reveal

Available as:

Swing/
Pocket/
Bypass/
Pivot/
Euro system 1" doors/
Euro bifold 1" doors/

The newest profile added to the DAYORIS line of custom doors, Ombra/ proudly displays an open jamb design incorporated in a multiplane door.

With the warmth of a wood jamb creating a shadow effect on its perimeter's edge, DAYORIS Ombra/ door presents itself as the perfect crossover from modernistic design to traditional architectural styling.

Adaptable to any wall thickness, Ombra/ can be installed either proud or flush with adjacent walls. The Ombra/ system can be installed using a variety of reglet reveal sizes affording the homeowner varying options to display the floating door jamb.

Ombra/ doors are manufactured using the Ceam 3D Italian Concealed Hinge System and the Bonaiti Magnetic mortise.

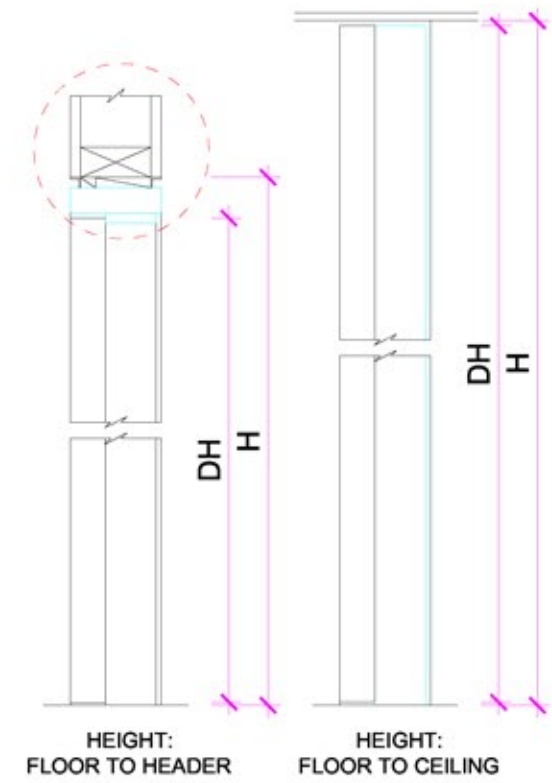
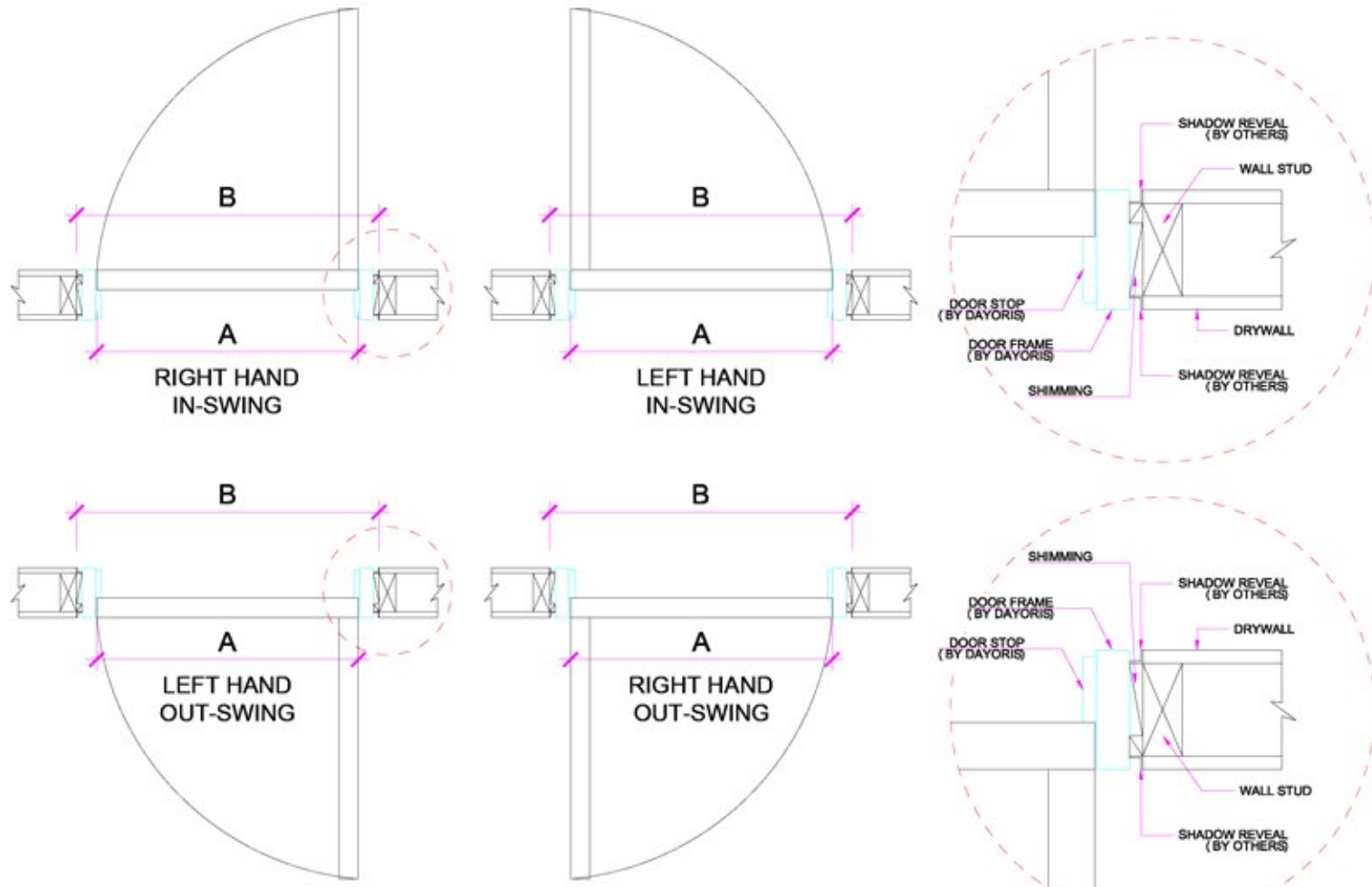
Technical Specifications:
Solid Core Door Slab
Thickness range -1-3/4"
Finish - Designer's choice
Hinges - CEAM Italia 3D adjustable
Frame - Wood finished
Handset - DAYORIS Italia
Mortise - Bonaiti Magnetic



Ombra/ white matte lacquer



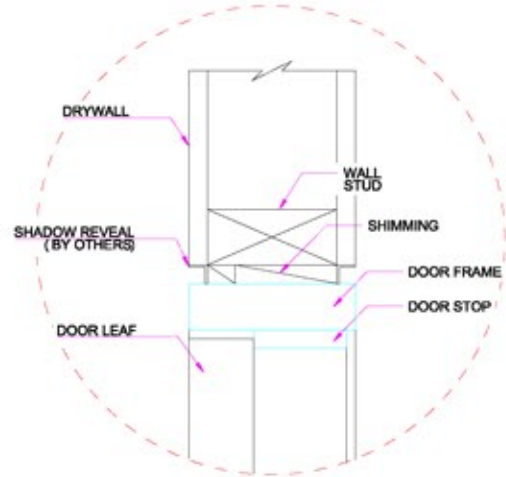
Ombra/ swing door detail



WIDTH FORMULA:
 $A = B - 3 \frac{1}{2}''$

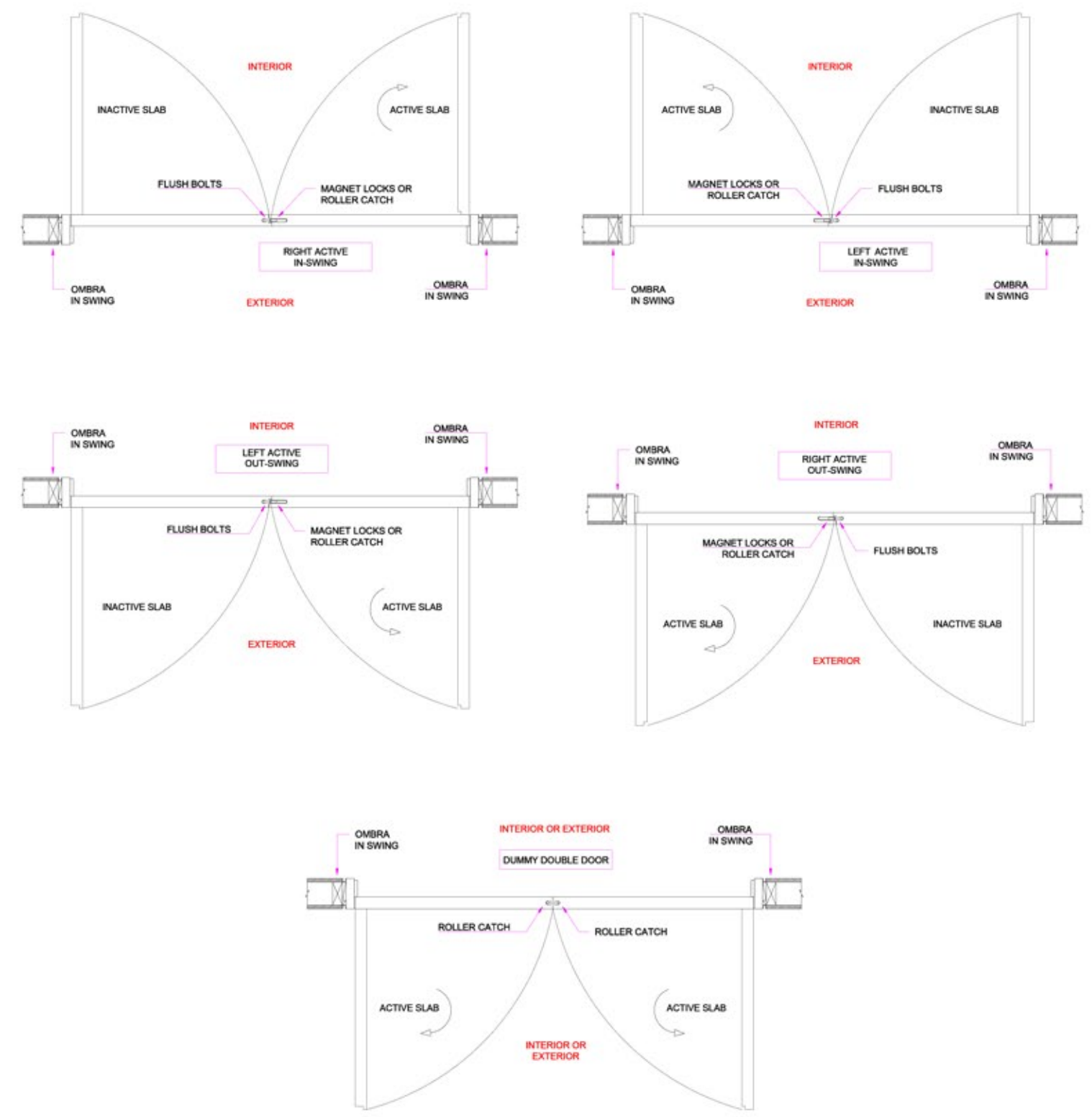
HEIGHT FORMULAS:
 FLOOR TO HEADER: $D.H. = H - 2''$
 FLOOR TO CEILING: $D.H. = H - 3 \frac{3}{8}''$

LEGEND:
 A = DOOR SIZE
 B = ROUGH OPENING WIDTH
 D.H. = DOOR HEIGHT
 H = ROUGH OPENING / FINISHED HEIGHT



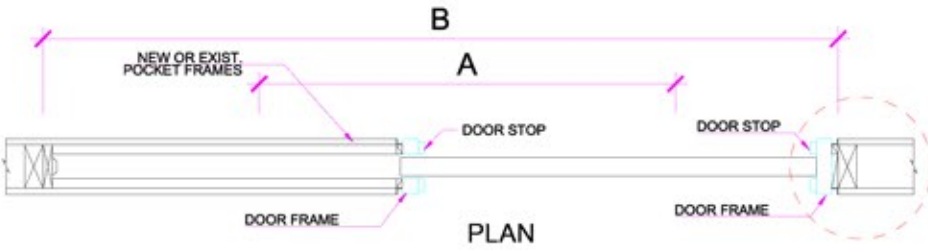
AVAILABLE IN DOUBLE DOOR SETS

Ombra/ swing door detail



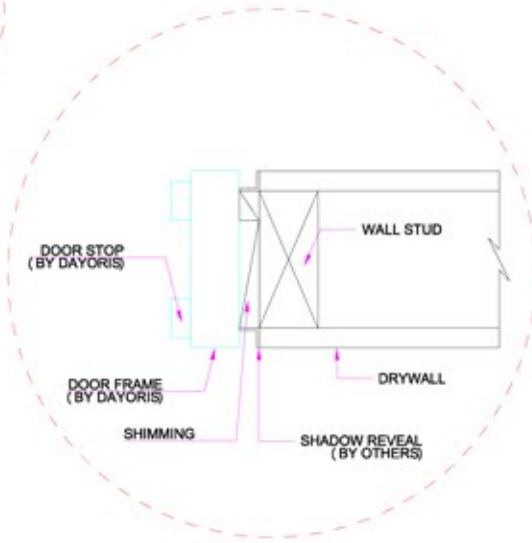
WIDTH
 DOOR WIDTH = $(ROUGH - 4'') / 2$

Ombra/ pocket door detail

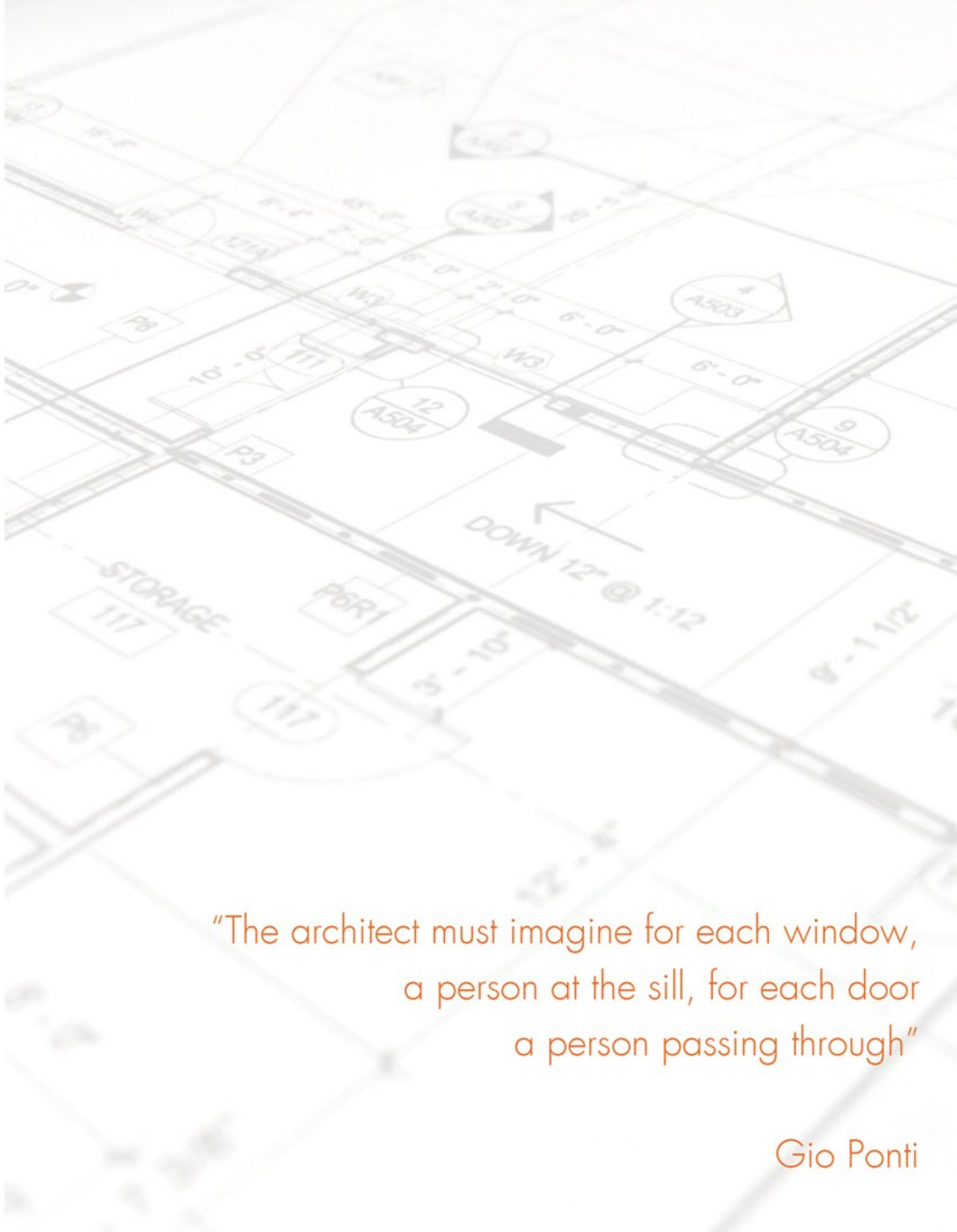
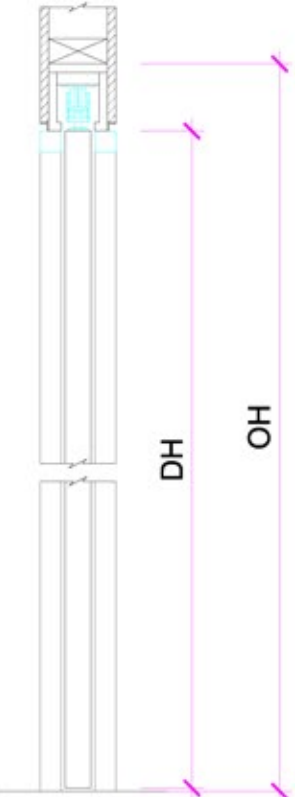
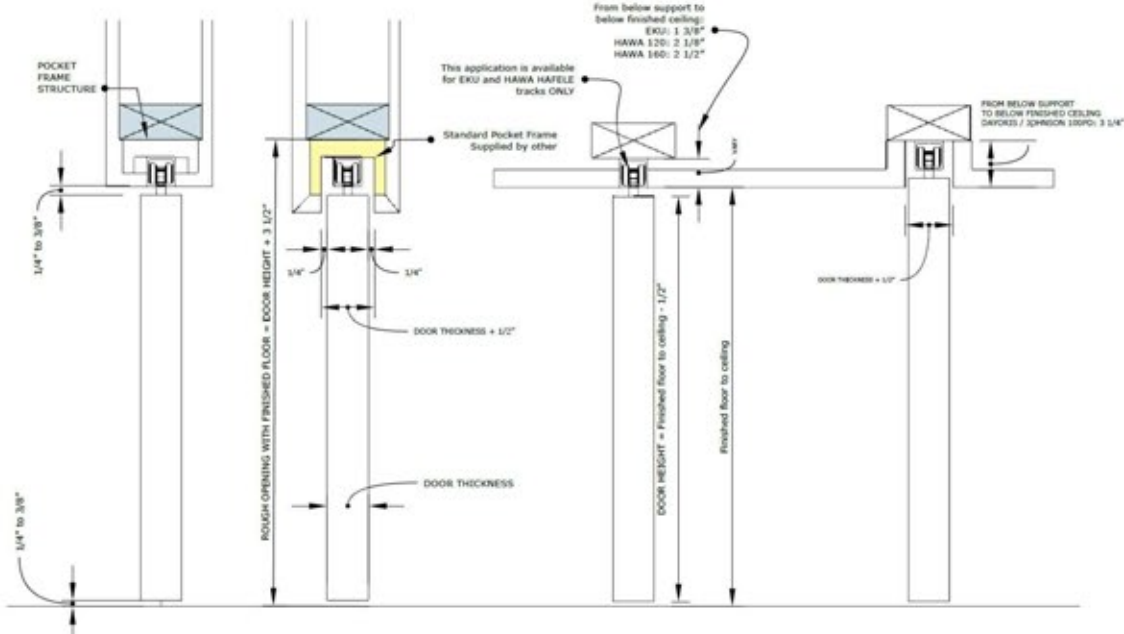


LEGEND:
 A = DOOR SIZE
 B = ROUGH OPENING WIDTH
 D.H. = DOOR HEIGHT
 H = ROUGH OPENING / FINISHED HEIGHT

WIDTH FORMULAS:
 $B = (A \times 2) + 2"$
 $A = (B - 2") / 2$



HEIGHT CONFIGURATIONS:



“The architect must imagine for each window, a person at the sill, for each door a person passing through”

Gio Ponti